

ENGLISH

**WINE**  **EMOTION™**  
wine dispensing system

MADE IN ITALY 

**SERIES 4**



Service Card

Bottled 700 ml

25 ml

50 ml





## The Wine Dispenser

---

Opening a new bottle of wine is always a magic moment, the aroma, the color and the taste will bring images, memories or simply fun and happy times.

Imagine reliving all this every time you pour a new glass of wine from your Wineemotion Wine dispenser.

That's what we are trying to achieve every time a wine dispenser leaves our factory.

## ...Reinvented.

---

Wineemotion Wine Dispensers have been serving, preserving and cooling wines for a decade now.

Since the first day we have been working to improve upon our products to give our customers an always more reliable product so that You can get the best glass of wine every time.

Challenges have been faced but finally we can offer the sum of all our research and hard work in the new line of Wine Dispensers, the SERIES 4!

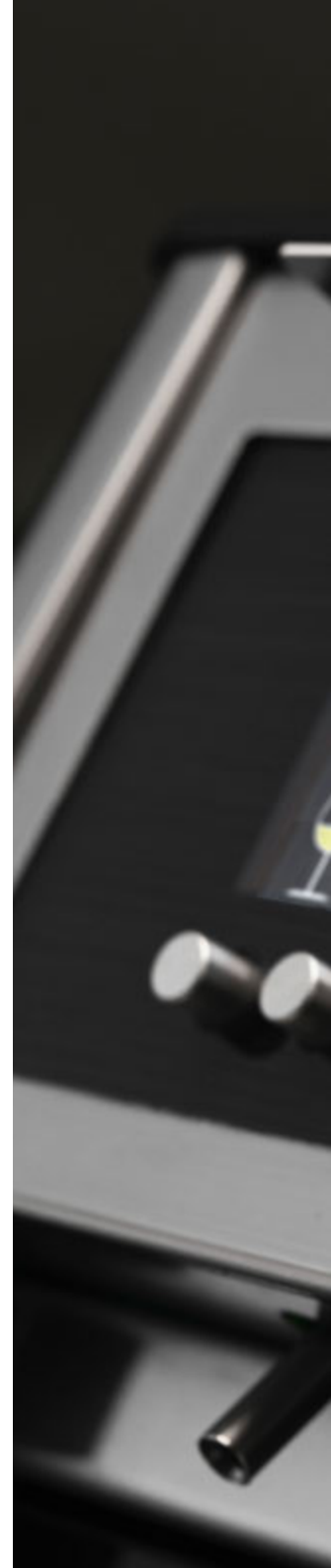
**otto** DUAL TEMPERATURE



**quattro**



**quattro** DUAL TEMPERATURE



Wineemotion  
Pinot Grigio  
Mezzacorona  
2017

€ 6.00	€ 9.00	€ 18.00
		

Wineemotion  
Pinot Grigio  
Mezzacorona  
2017

€ 6.00	€ 9.00	€ 18.00
		



## 1. Horizontal Card Reader

---

The new Series 4 dispensers feature a horizontal card reader for easier access. Optional RFID card reading capability has also been added in order to reach a wider range of customers.

Thanks to the Wineidea software you'll be able to manage your customers and all the aspects of your wine business.

## 2. New Wine Tap Technology.

---

Wineemotion's goal has always been to find the best solution to preserve and pour wine without altering the taste. The latest version of our Wine Tap will serve this purpose even better, with a new motorized pump that cleans all the residues from the nozzle. This will improve wine preservation and dispenser reliability.

## 3. Motion Sensor.

---

In order to prolong the life of the displays and to save energy, new dispensers are equipped with a motion sensor





that activates the displays only when people are actually around it.

## 4. Color TFT Display.

All **SERIES 4** self service dispensers feature TFT color displays. Now white and red wines can be quickly discerned at a glance.

## 5. Dual Temperature

The eight bottle dispenser features two separate areas with independent compressors and cooling system so that ensure a completely separated management of the temperatures.

Silent, reliable and powerful, the new cooling system will keep your wines at the right temperature.

## 6. Frontal Air Flow.

The new design with the frontal air flow allows the dispenser to be fully encased without the need of leaving space on the top or the back for more creative design solutions.

## otto DUAL TEMPERATURE



### USE AND ACTIVATION SYSTEM

Dispenser works in behind the bar mode (no wine card) or self service with wine card (chip or RFID\*) or barcode reader\*.



### SERVICE TEMPERATURES

Using the divider the left zone can be set from 6°C to 22°C.  
Without divider from 15°C to 22°C



### DOSAGES

Up to three different dosage through high quality mechanical buttons.



### SOFTWARE CONNECTION

Connection between modules and software through LAN wire and WI/FI\* with TCP/IP protocol.



### BOTTLES LIFTING SYSTEM

Lifting system with pneumatic pistons.



### WINE CARD

Chip or RFID\* cards.



### REFRIGERATION SYSTEM

Use of modern no-frost, noiseless professional cooling system.



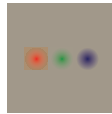
### GAS

Nitrogen or food grade Argon (cylinder or generator not included).



### CUSTOMIZATIONS

Machine color can be customized, Front panel can be silkscreened\*



### LED ILLUMINATION

Intelligent led RGB system for an infinite variety of color combinations.



### LOCKING SYSTEM

Automatic lock activated by Smart Card or RFID\*.



### ANTI CONDENSATION GLASS

Glass doors are treated with a special coating that prevents condensation .

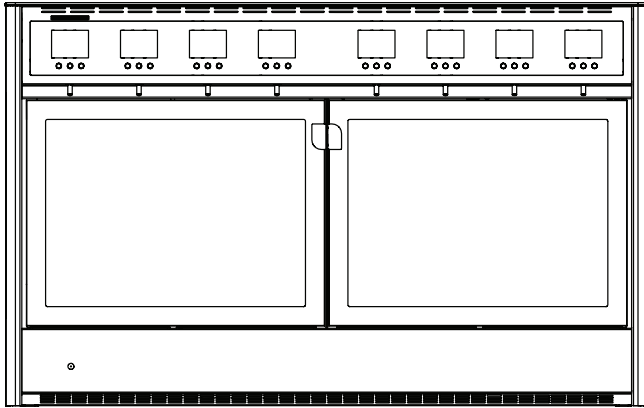
\*Optional







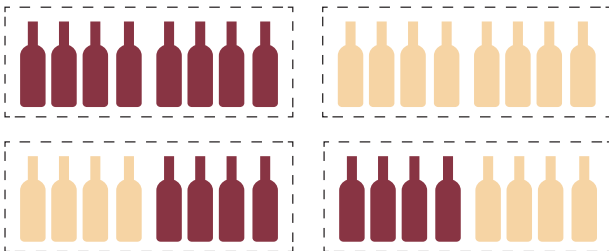
**otto** DUAL TEMPERATURE



### Dimensions and Weight

Width	1010mm   39 3/4"
Height	632mm   24 7/8"
Depth	398mm   15 1/16"
Weight	71kg   156lbs

### Temperature Combinations





## quattro DUAL TEMPERATURE



### USE AND ACTIVATION SYSTEM

Dispenser works in behind the bar mode (no wine card) or self service with wine card (chip or RFID\*) or barcode reader\*.



### SERVICE TEMPERATURES

Using the divider the left zone can be set from 6°C to 22°C.  
Without divider from 15°C to 22°C



### DOSAGES

Up to three different dosage through high quality mechanical buttons.



### SOFTWARE CONNECTION

Connection between modules and software through LAN wire and WI/FI\* with TCP/IP protocol.



### BOTTLES LIFTING SYSTEM

Lifting system with pneumatic pistons.



### WINE CARD

Chip or RFID\* cards.



### REFRIGERATION SYSTEM

Use of modern no-frost, noiseless professional cooling system.



### GAS

Nitrogen or food grade Argon (cylinder or generator not included).



### CUSTOMIZATIONS

Machine color can be customized, Front panel can be silkscreened\*



### LED ILLUMINATION

Intelligent led RGB system for an infinite variety of color combinations.



### LOCKING SYSTEM

Automatic lock activated by Smart Card or RFID\*.



### ANTI CONDENSATION GLASS

Glass doors are treated with a special coating that prevents condensation .

\*Optional



## quattro



### USE AND ACTIVATION SYSTEM

Dispenser works in behind the bar mode (no wine card) or self service with wine card (chip or RFID\*) or barcode reader\*.



### SERVICE TEMPERATURES

Single zone ranging from 6°C to 22°C.



### DOSAGES

Up to three different dosage through high quality mechanical buttons.



### SOFTWARE CONNECTION

Connection between modules and software through LAN wire and WI/FI\* with TCP/IP protocol.



### BOTTLES LIFTING SYSTEM

Lifting system with pneumatic pistons.



### WINE CARD

Chip or RFID\* cards.



### REFRIGERATION SYSTEM

Use of modern no-frost, noiseless professional cooling system.



### GAS

Nitrogen or food grade Argon (cylinder or generator not included).



### CUSTOMIZATIONS

Machine color can be customized, Front panel can be silkscreened\*



### LED ILLUMINATION

Intelligent led RGB system for an infinite variety of color combinations.



### LOCKING SYSTEM

Automatic lock activated by Smart Card or RFID\*.



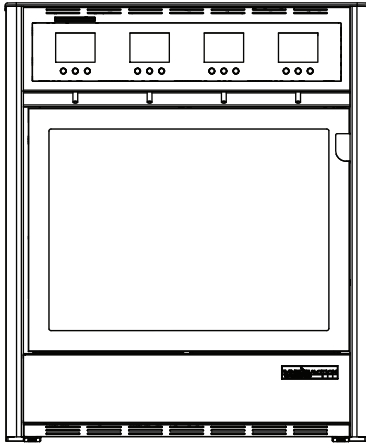
### ANTI CONDENSATION GLASS

Glass doors are treated with a special coating that prevents condensation .

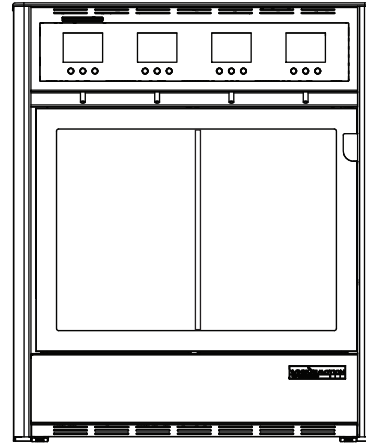
\*Optional



quattro



quattro DUAL TEMPERATURE



Dimensions and Weight

Width	528mm   20 13/16"
Height	632mm   24 7/8"
Depth	398mm   15 1/16"
Weight	42kg   92.5lbs

Width	528mm   20 13/16"
Height	632mm   24 7/8"
Depth	398mm   15 1/16"
Weight	42kg   92.5lbs

Temperature Combinations







## 1. New Wine Tap Technology.

---

Wineemotion's goal has always been to find the best solution to preserve and pour wine without altering the taste. The latest version of our Wine Tap will serve this purpose even better, with a new motorized pump that cleans all the residues from the nozzle. This will improve wine preservation and dispenser reliability.

## 2. Gas Spring Pistons.

---

Easy means "easy to use". The gas spring pistons with "push-push" technology allow you to lower the pistons with just one push and push again to engage the bottle.

## 3. Easy Interface!

---

The dispensers in the "Easy" line all feature a new simplified and easy to learn interface. Commands are simple and intuitive with all the main information at a glance.





## 4. Dual Temperature

---

The eight bottle dispenser features two separate areas with independent compressors and cooling system so that ensure a completely separated management of the temperatures.

Silent, reliable and powerful, the new cooling system will keep your wines at the right temperature.

## 5. Frontal Air Flow.

---

The new design with the frontal air flow allows the dispenser to be fully encased without the need of leaving space on the top or the back for more creative design solutions.

# SERIES 4 /EASY

## otto DUAL TEMPERATURE /EASY



## quattro /EASY





CONTIENS SULFITES - CONTIENE SOLFITI - CONTAINS SULPHITES - ENTHÄLT S

Azienda

**BARBARESCO**  
DENOMINAZIONE DI ORIGINE CONTROLLATA  
E GARANTITA

Ronde

2018

ESTATE BOTTLED BY - IMBOTTIGLIATO IN AZIENDA  
AZIENDA AGRICOLA RONDE  
BARBARESCO

75 cl e

RED WINE - PRODUCT OF ITALY

## otto DUAL TEMPERATURE /EASY



### SERVICE TEMPERATURES

Fully independent zones ranging from 6°C to 22°C.



### POURS

Up to three different dosage through high quality mechanical buttons.



### BOTTLES LIFTING SYSTEM

Lifting system with gas spring pistons.



### REFRIGERATION SYSTEM

Use of modern no-frost, noiseless professional cooling system.



### GAS

Nitrogen or food grade Argon (cylinder or generator not included).



### CUSTOMIZATIONS

Machine color can be customized, Front panel can be silkscreened\*



### LOCKING SYSTEM

Electronic lock for the door and PIN lock for the buttons.



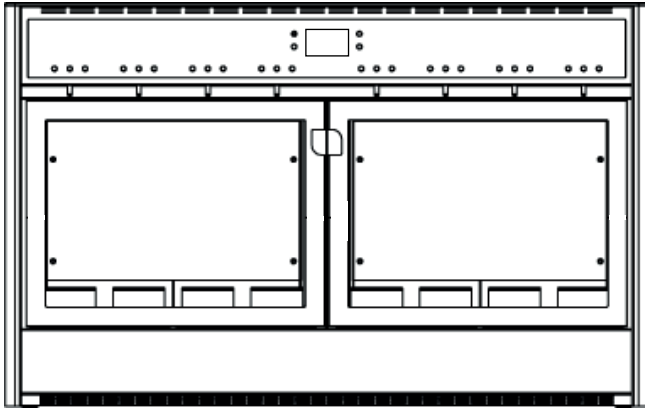
### ANTI CONDENSATION GLASS

Glass doors are treated with a special coating that prevents condensation .

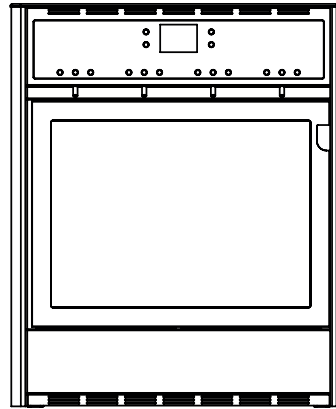




otto **DUAL TEMPERATURE** /EASY



quattro /EASY

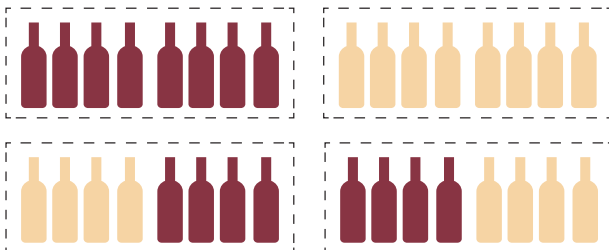


### Dimensions and Weight

Width	1010mm   39 <sup>3</sup> / <sub>4</sub> "
Height	632mm   24 <sup>7</sup> / <sub>8</sub> "
Depth	398mm   15 <sup>1</sup> / <sub>16</sub> "
Weight	70kg   154lbs

Width	528mm   20 <sup>13</sup> / <sub>16</sub> "
Height	632mm   24 <sup>7</sup> / <sub>8</sub> "
Depth	398mm   15 <sup>1</sup> / <sub>16</sub> "
Weight	41kg   90.5lbs

### Temperature Combinations







## 1. New Wine Tap Technology.

---

Wineemotion's goal has always been to find the best solution to preserve and pour wine without altering the taste. The latest version of our Wine Tap will serve this purpose even better, with a new motorized pump that cleans all the residues from the nozzle. This will improve wine preservation and dispenser reliability.

## 2. Easy Interface!

---

The dispensers in the "Easy" line all feature a new simplified and easy to learn interface. Commands are simple and intuitive with all the main information at a glance.

## 3. Capacitive Touch Panel.

---

All the Duetto Dispensers are equipped with new capacitive touch buttons on a glass panel, Elegance and easy of use at your fingertips!

## 4. Dual Temperature

---

The Duetto features two separate areas with independent compressors and cooling system so that ensure a completely separated management of the temperatures.

Silent, reliable and powerful, the new cooling system will keep your wines at the right temperature.



## duetto DUAL TEMPERATURE



### SERVICE TEMPERATURES

Fully independent zones ranging from 6°C to 22°C.



### CUSTOMIZATIONS

Machine color can be customized, Front panel can be silkscreened\*



### POURS

Up to three different dosage through high quality mechanical buttons.



### LOCKING SYSTEM

Electronic lock for the door and PIN lock for the buttons.



### BOTTLES LIFTING SYSTEM

Lifting system with gas spring pistons.



### ANTI CONDENSATION GLASS

Glass doors are treated with a special coating that prevents condensation .



### REFRIGERATION SYSTEM

Use of modern no-frost, noiseless professional cooling system.



### GAS

Nitrogen or food grade Argon (cylinder or generator not included).

## Dimensions and Weight

Width	615mm   24 3/16"
Height	568mm   22 1/2"
Depth	374mm   14 11/16"
Weight	45kg   99lbs

## Temperature Combinations

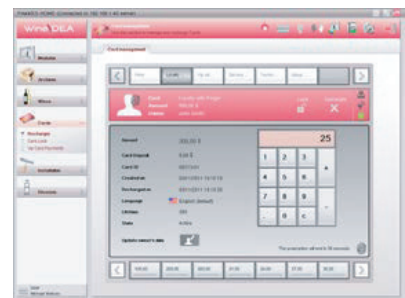
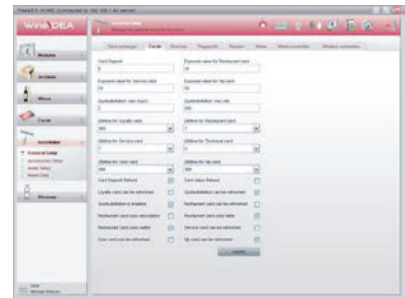
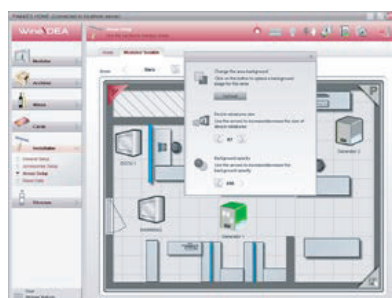
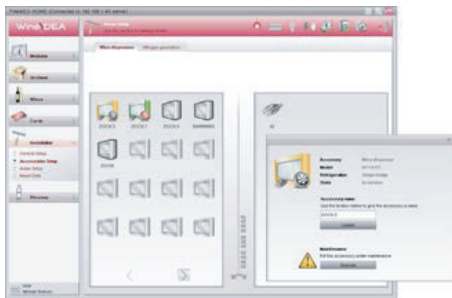
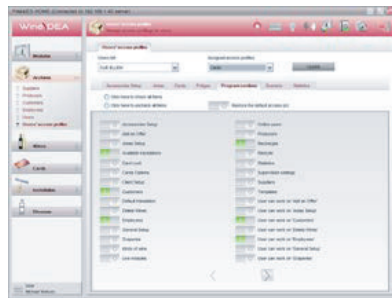


duetto



Wine)dea is the perfect companion for the Wine)emotion dispensers. A modern, easy to use and visually pleasant environment to manage and keep track of all transactions and wines in your dispensers.

Wine)dea is available in three versions to meet all your needs.







**WINEEMOTION**  
wine dispensing system

WINEEMOTION SPA  
STRADA DI SANT'APPIANO, 9/A  
50021 BARBERINO VAL D'ELSA FIRENZE (ITALY)  
VAT: IT06231920486  
TEL: +39 055 3985422  
FAX+39 055 0512550

[info@wineemotion.com](mailto:info@wineemotion.com)  
[info@wineemotionrental.com](mailto:info@wineemotionrental.com)



## CERTIFICATIONS

USA & CANADA 110VAC 60Hz

NSF 25  
UL 751  
UL 541  
CSA C22.2 #128



EUROPE & WORLD 220VAC 50Hz

NSF 25  
IEC 60335-1  
IEC 60335-2-75  
IEC 60335-2-24

